



赣工机械设备科技(东莞)有限公司

TEL: 15920631511

PART NUMBER: STD131

REVISION: F

Product Specifications

Model Number	MAX. PRESS.		MAX. SPEED	HP	kW	Net Wt.	
	bar.	PSI				lbs.	kg
*6AM-NRV-11	7.0	100	3,000 RPM	4.0	3.0	21	9.5
6AM-NRV-11A	7.0	100	3,000 RPM	4.0	3.0	21	9.5
6AM-NRV-22A	7.0	100	3,000 RPM	4.0	3.0	21	9.5

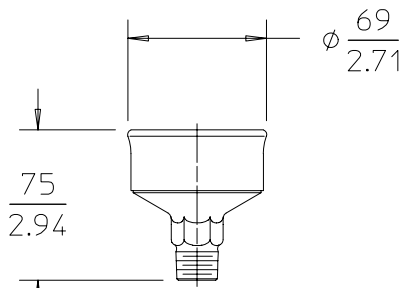
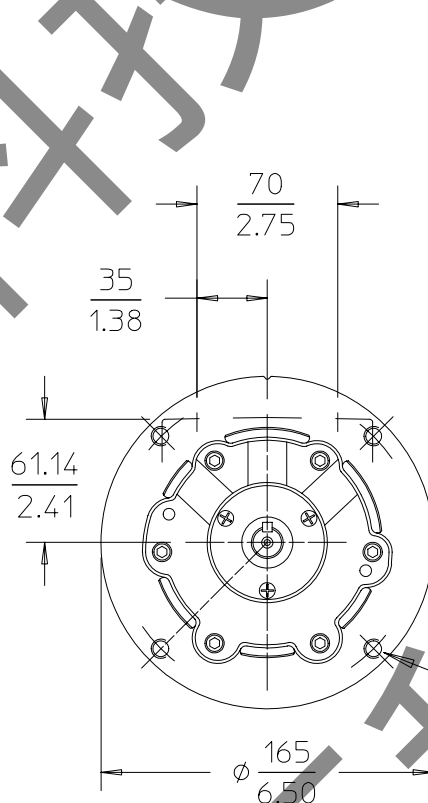
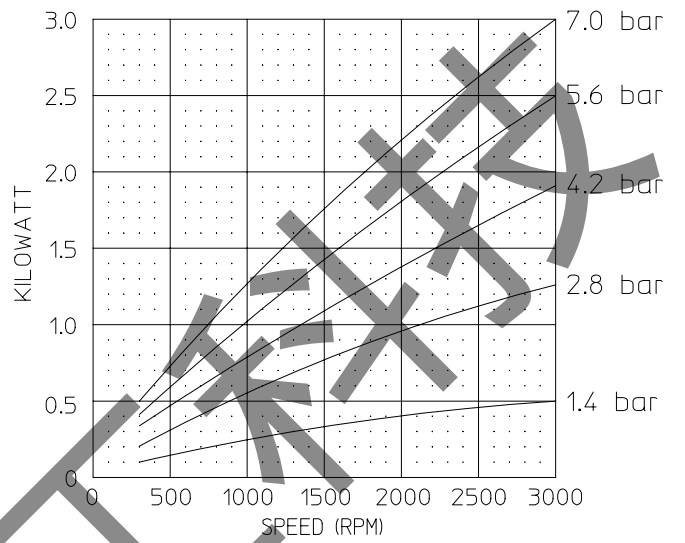
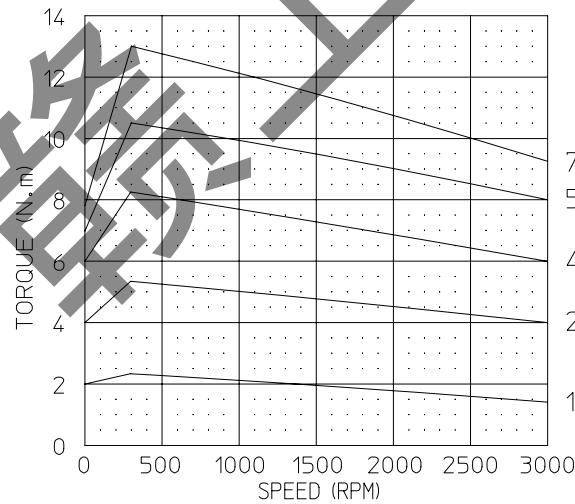
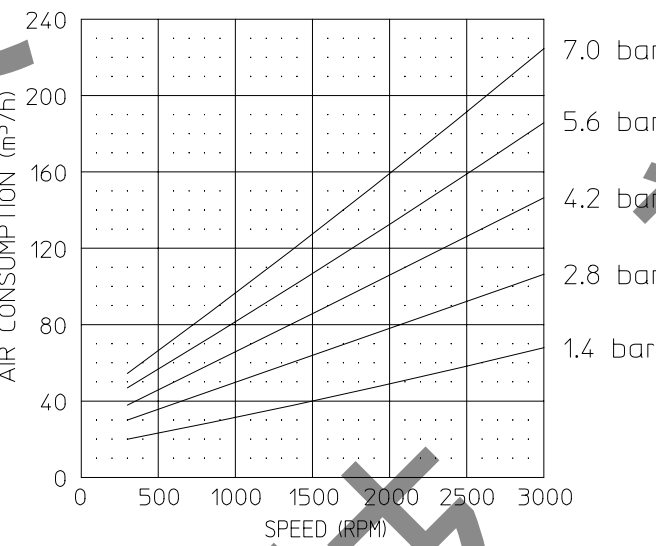
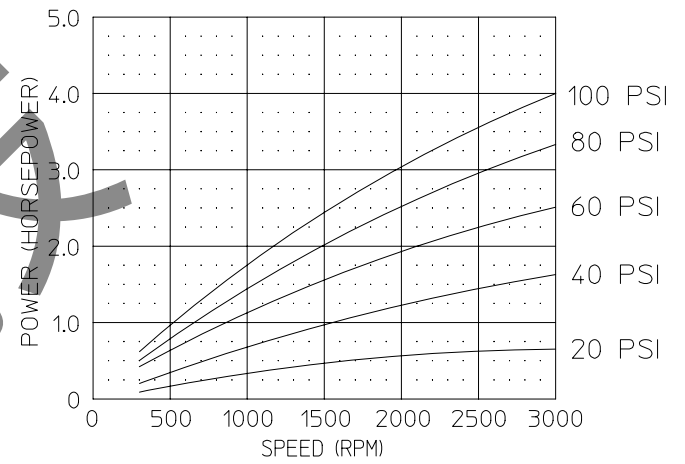
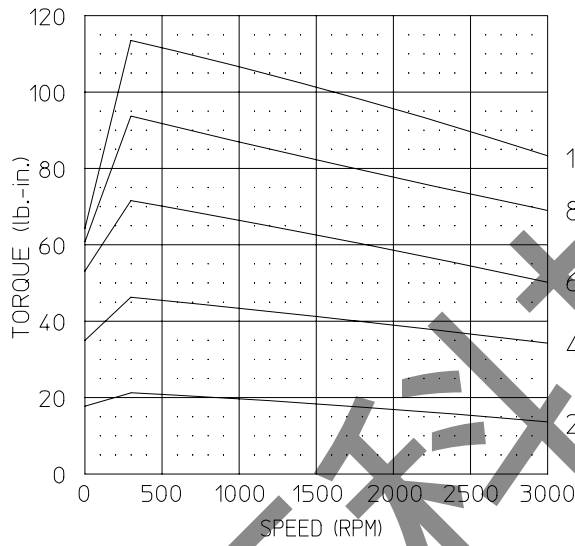
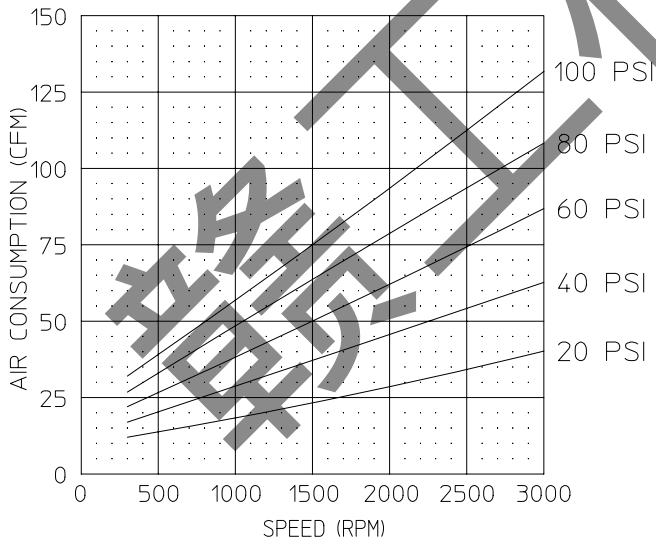
SOUND LEVEL 90 dB(A) MAX. CONFORMS TO EUROPEAN STANDARD EN13463-1 NON-ELECTRICAL EQUIPMENT FOR EXPLOSIVE ATMOSPHERES GROUP II CAT 2 (GAS & DUST), PROTECTED BY CONSTRUCTION (SURFACE TEMP RATED 135°C)

NORMAL AMBIENT +1°C. - 120°C.

RELATIVE HUMIDITY 0% - 100%

ENVIRONMENT HAZARDOUS AMBIENT COMBUSTIBLE GAS AND DUST +1°C TO +40°C

* DENOTES INACTIVE UNITS



MUFFLER ASSEMBLY SHIPPED UNATTACHED (NOT INCLUDED WITH MODEL 6AM-NRV-11)

4x 3/8-16 ON ϕ 149mm (5.88") BOLT CIRCLE

